

Name: \_\_\_\_\_ ( )

Class: Primary 3 \_\_\_\_\_

## CHIJ ST NICHOLAS GIRLS' SCHOOL



**Primary 3**  
**Semestral Assessment 1 –2015**  
**SCIENCE**  
**BOOKLET A**  
**14 May 2015**

**Total Time for Booklets A and B: 1 hour 15 minutes**

**15 questions**  
**30 marks**

**Do not open this booklet until you are told to do so.**

**Follow all instructions carefully.**

**Answer all questions.**

**Shade your answers in the Optical Answer Sheet (OAS) provided.**

***This booklet consists of 14 printed pages.***

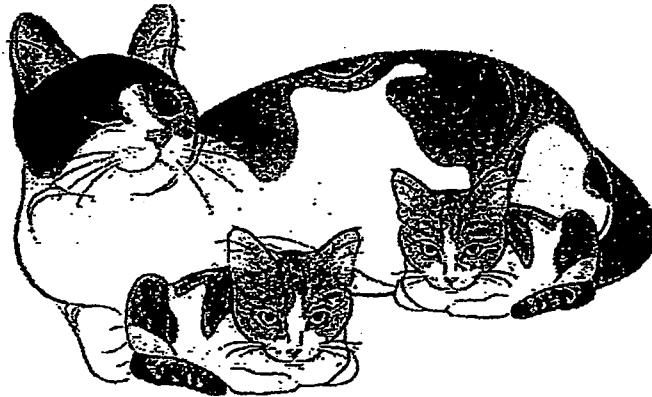
**SECTION A (MULTIPLE-CHOICE QUESTIONS) [15 x 2 marks = 30 marks]**

For each question from 1 to 15, four options are given. One of them is the correct answer. Make your choice (1, 2, 3 or 4). Shade the correct oval (1, 2, 3 or 4) on the Optical Answer Sheet (OAS) provided.

1. Which one of the following is classified correctly?

	Living Things	Non-Living Things
(1)	Feather	Car
(2)	Robot	Baby Doll
(3)	Music	Eraser
(4)	Grass	Water

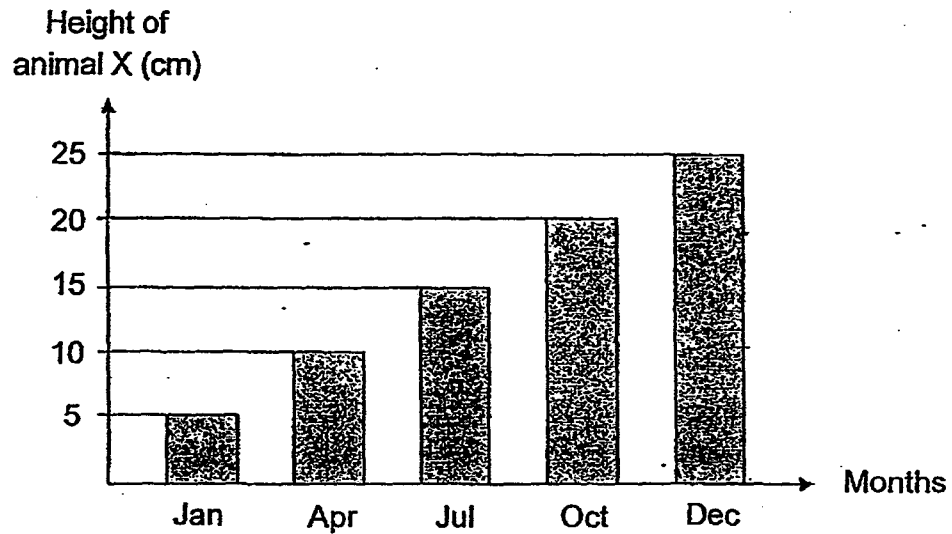
2. The diagram below shows a mother cat and her kittens.



Based on what is observable in the above diagram, which one of the characteristic of living things is shown?

- (1) Living things can grow.
- (2) Living things can reproduce.
- (3) Living things can move around freely.
- (4) Living things can respond to changes around them.

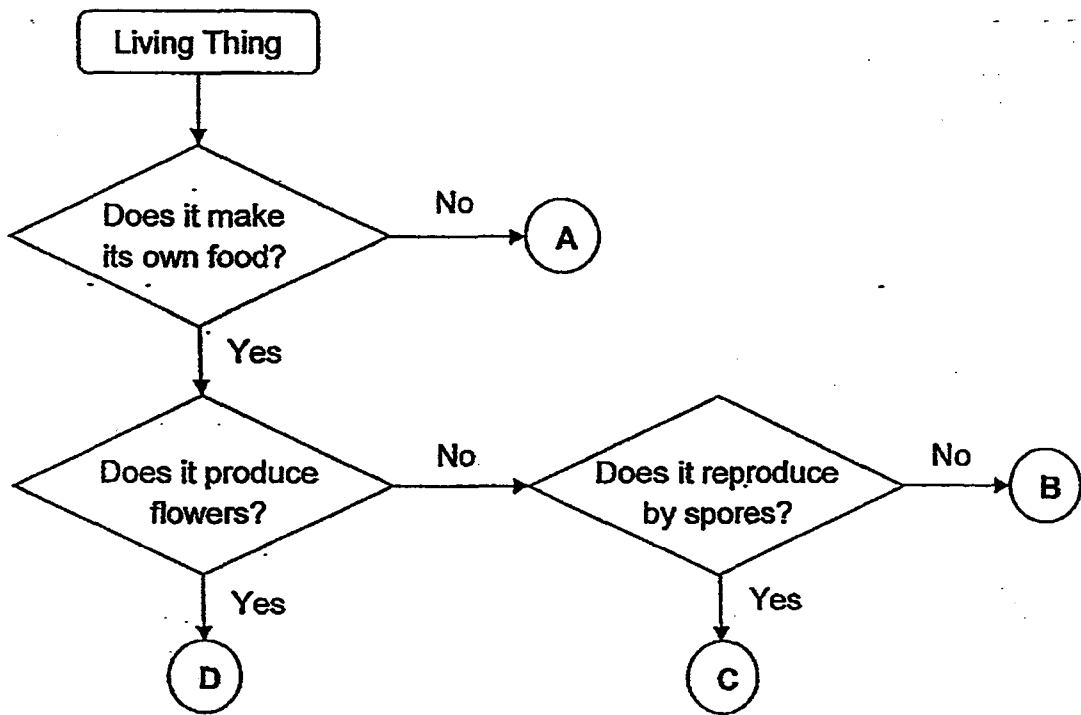
3. The graph below shows the height of animal X over 12 months.



Based on the graph above, which one of the following statements is most likely true?

- (1) Animal X grew taller every month.
- (2) Animal X reproduced during the 12 months.
- (3) The width of animal X grew wider every 3 months.
- (4) The increase in height of animal X is the same every 3 months.

4. Study the flowchart below.



Based on the above flowchart, which one of the following best represents a Bird's Nest Fern?

- (1) A
- (2) B
- (3) C
- (4) D

5. The diagram below shows two living things.



Ladder's Fern



Dandelion Plant

Which of the following statements are true for both the living things shown above?

- A Both can grow.
- B Both reproduce by spores.
- C Both can make their own food.
- D Both are able to respond to stimuli.

- (1) A and C only
- (2) B and D only
- (3) A, C and D only
- (4) A, B, C and D

6. The diagram below shows two plants, X and Y.



Plant X



Plant Y

Three pupils, Ahmad, Bryan and <sup>Cindy</sup> ~~Clara~~, made some statements about the two plants as shown below.

- |       |   |
|-------|---|
| Ahmad | Both plants can bear fruits.                  |
| Bryan | Both plants produce fruits with many seeds.   |
| Cindy | Both plants need light in order to make food. |

Which of the above pupil(s) has / have made the correct statement(s)?

- (1) Bryan only
- (2) Ahmad and Bryan only
- (3) Ahmad and Cindy only
- (4) Ahmad, Bryan and Cindy

7. Tom had to classify the four animals given below.



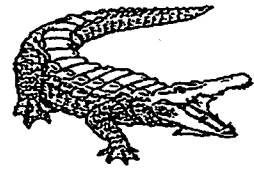
Pigeon



Owl

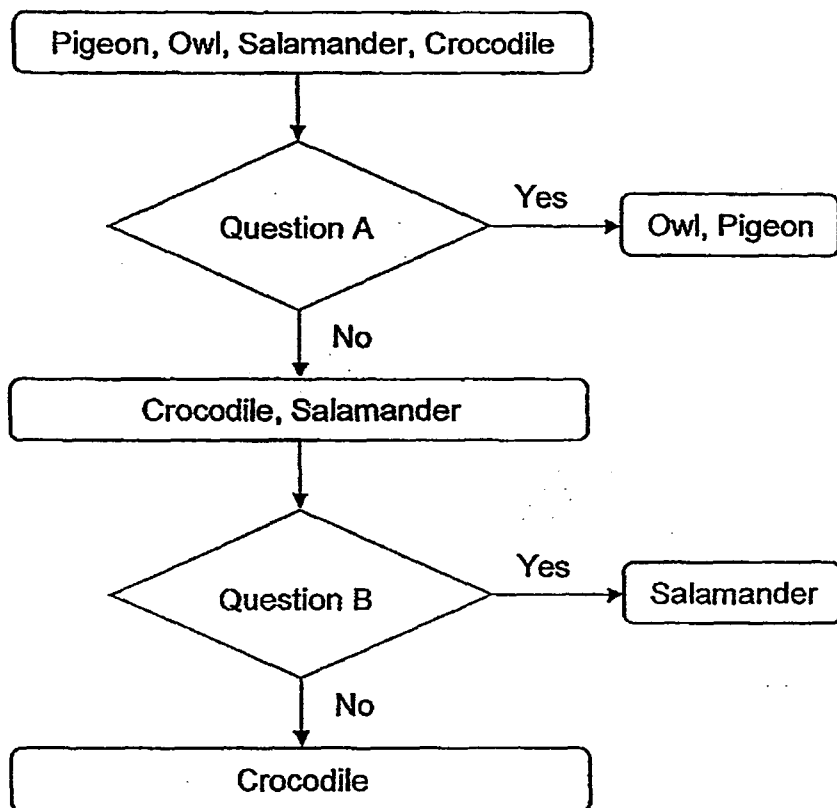


Salamander



Crocodile

He classified them with the help of the chart below.



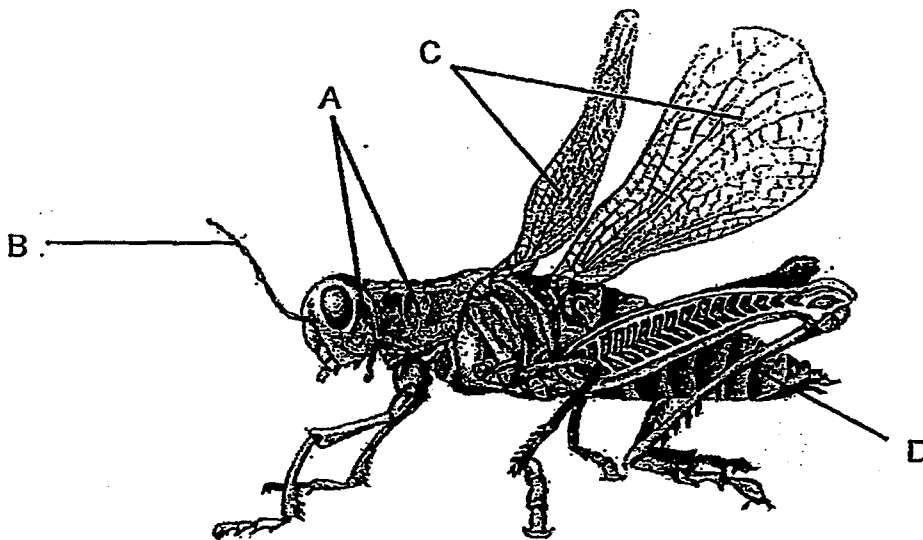
Which one of the following best represents questions A and B?

	Question A	Question B
(1)	Do they have feathers?	Do they lay eggs?
(2)	Do they have wings?	Do they lay eggs?
(3)	Do they have feathers?	Do they have scales?
(4)	Do they have wings?	Do they have moist skin?

8. Which one of the following statements correctly states the similarity between amphibians and reptiles?

- (1) Both amphibians and reptiles lay eggs.
- (2) All amphibians and reptiles have moist skin.
- (3) All amphibians and reptiles have 3 pairs of legs.
- (4) Both amphibians and reptiles breathe through lungs only.

9. The diagram below shows a grasshopper.



Which of the above parts protects the grasshopper's soft body and give it, its shape?

- (1) A and B only
- (2) A and D only
- (3) B and C only
- (4) C and D only



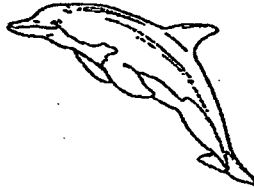
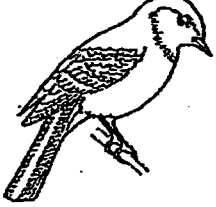


10. Which of the following statements are true of most mammals?

- A They cannot fly.
- B They can only live on land.
- C They breathe through lungs.
- D They have hair or fur as their body covering.

- (1) A and B only
- (2) C and D only
- (3) A, B and C only
- (4) B, C and D only

11. Study the classification table below.

Group A	Group B
 Salmon	 Bat
 Dolphin	 Sparrow

Which one of the following headings best represents Group A and Group B?

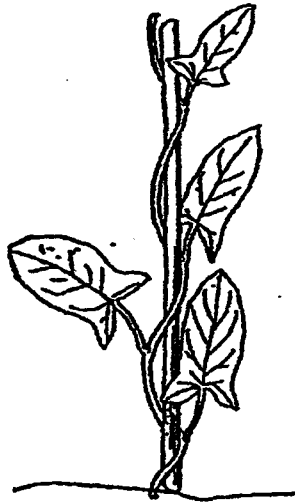
	Group A	Group B
(1)	Fish	Bird
(2)	Cannot fly	Can fly
(3)	Has scales	Has feathers
(4)	Breathes through gills	Breathes through lungs

12. Which of the following statements about fungi and bacteria are incorrect?

- A All fungi and bacteria feed only on dead matter.
- B Some fungi and bacteria are useful to humans.
- C Both fungi and bacteria come only in one type of shape.
- D All fungi and bacteria can only be clearly seen under a microscope.

- (1) A and B only
- (2) C and D only
- (3) A, B and C only
- (4) A, C and D only

13. The diagram below shows two plants.



Plant X

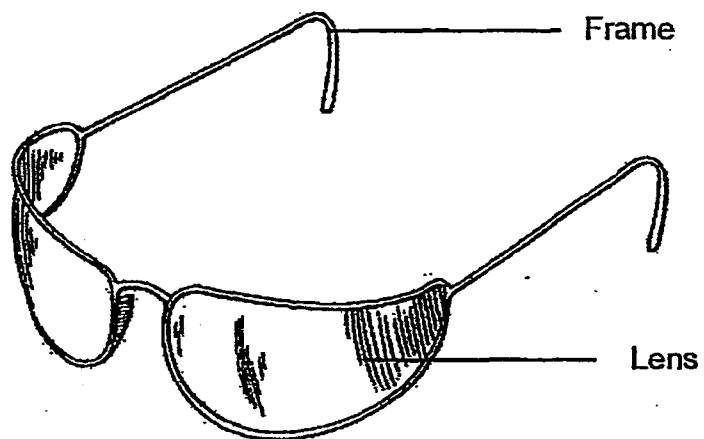


Plant Y

Based only on what is observable in the diagram above, how is plant X similar to plant Y?

- A Both have fruits.
  - B Both have stems.
  - C Both have leaves.
  - D Both have flowers.
- 
- (1) A and D only
  - (2) B and C only
  - (3) B, C and D only
  - (4) A, B, C and D

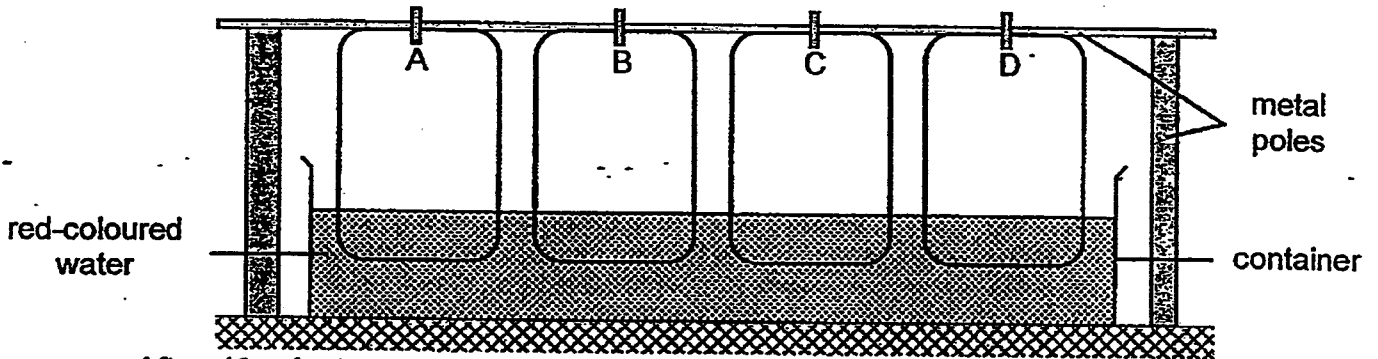
14. Fauzi wants to make the lens of a pair of spectacles.



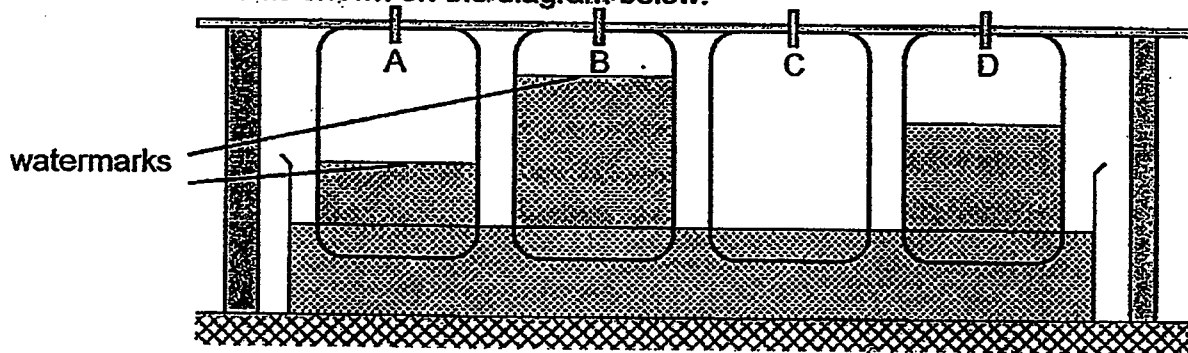
Which of the following properties must be considered when he wants to make the lens as shown above?

- A Flexible
  - B Strength
  - C Waterproof
  - D Transparency
- 
- (1) A and D only
  - (2) B and C only
  - (3) A, C and D only
  - (4) B, C and D only

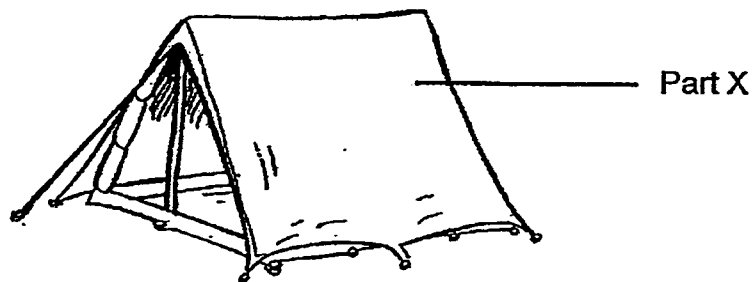
15. Selvi set up an experiment to find out the ability of different materials to absorb water. She placed the ends of 4 pieces of materials, A, B, C and D, all at the same time, into a container of red-coloured water as shown in the diagram below. The materials were of the same shape and size.



After 10 minutes, she observed the height of the watermark on each of the four materials as shown on the diagram below.



Based only on the above results, which one of the materials, A, B, C or D, is most suitable to be made into part X of a tent used for camping in the outdoors?



- (1) Material A
- (2) Material B
- (3) Material C
- (4) Material D

END OF BOOKLET A

Name : \_\_\_\_\_ ( )

Class : Primary 3 \_\_\_\_\_

## CHIJ ST NICHOLAS GIRLS' SCHOOL



### Primary 3 Semestral Assessment 1 – 2015

### SCIENCE

### BOOKLET B

14 May 2015

Total Time for Booklets A and B: 1 hour 15minutes

7 questions  
20 marks

Do not open this booklet until you are told to do so.  
Follow all instructions carefully.  
Answer all questions.

This paper consists of 7 printed pages.

Booklet A	30
Booklet B	20
Total	50

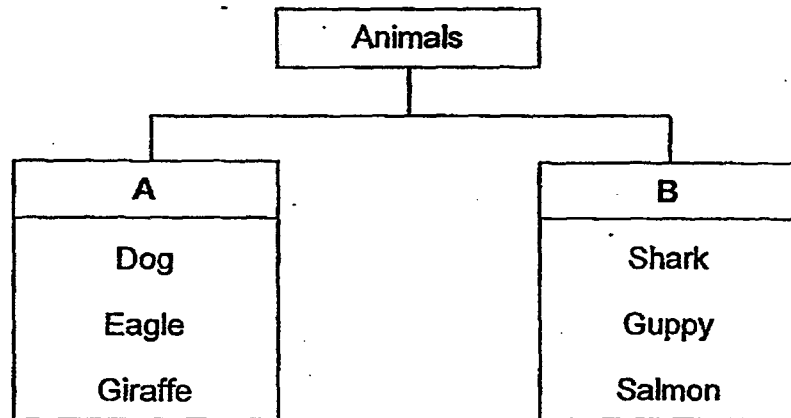
Parent's Signature/Date

**SECTION B (OPEN-ENDED QUESTIONS) [20 marks]**

For questions 16 to 22, write your answers in this booklet. The number of marks available is shown in the brackets [ ] at the end of each question or part question.

---

16. The classification chart given below shows some animals classified based on a certain characteristic.



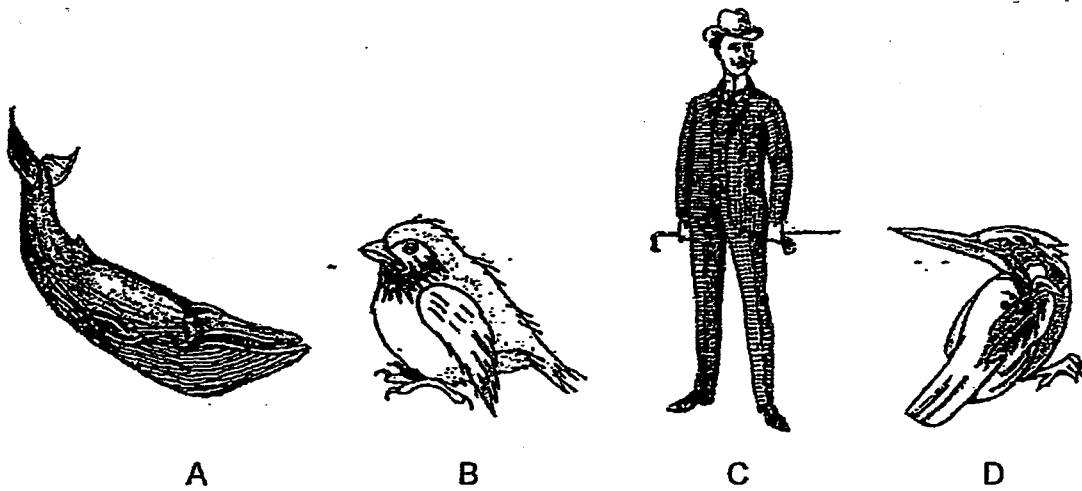
- (a) How are the animals in the above classification chart above being classified? [1]
- 

- (b) Based on the classification chart above, which animal group, A or B, can an adult frog be classified under? Give a reason for your answer. [2]
- 
- 

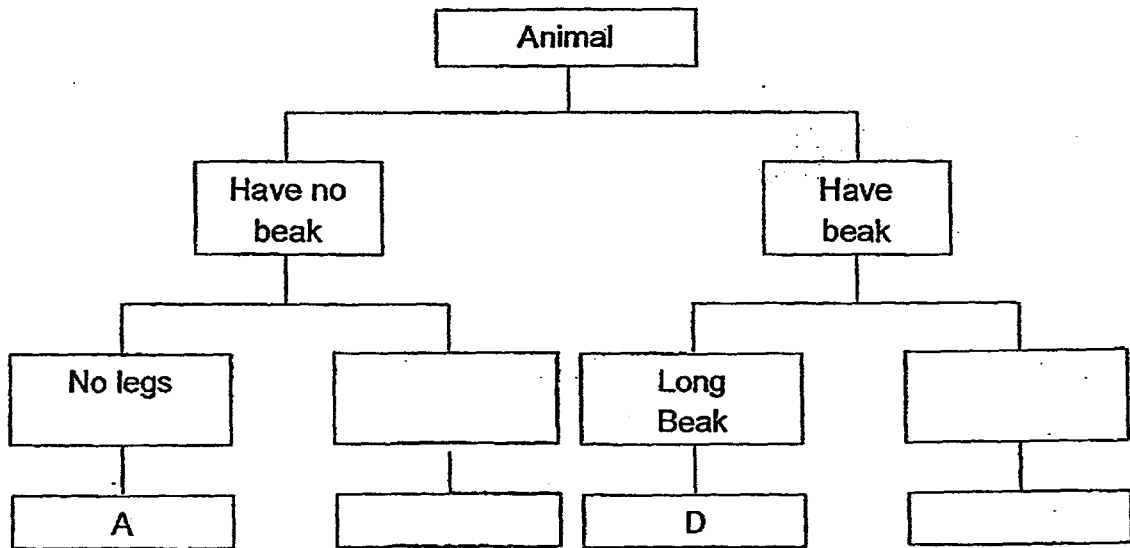




17. The diagram below shows four different animals, A, B, C and D.



Based only on what is observable in the diagrams above, complete the classification chart below by filling in the boxes. [2]

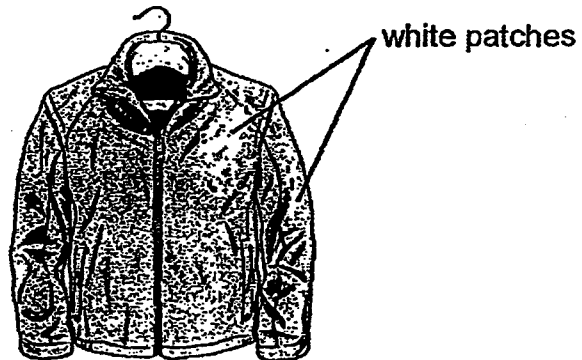


18. Zaiton has two wardrobes, A and B. She hung a moisture absorber, as shown below, in wardrobe A only.



Moisture Absorber

After 6 months, she observed white patches growing on her leather jacket.



Black Leather Jacket

- (a) What do you think the white patches are? [1]

---

- (b) Based on her observation, in which wardrobe, A or B, was the leather jacket placed? [1]

---

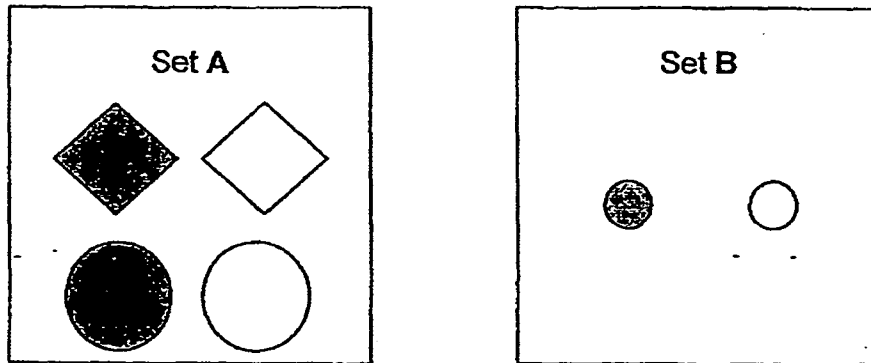
- (c) Explain your answer in (b). [1]

---

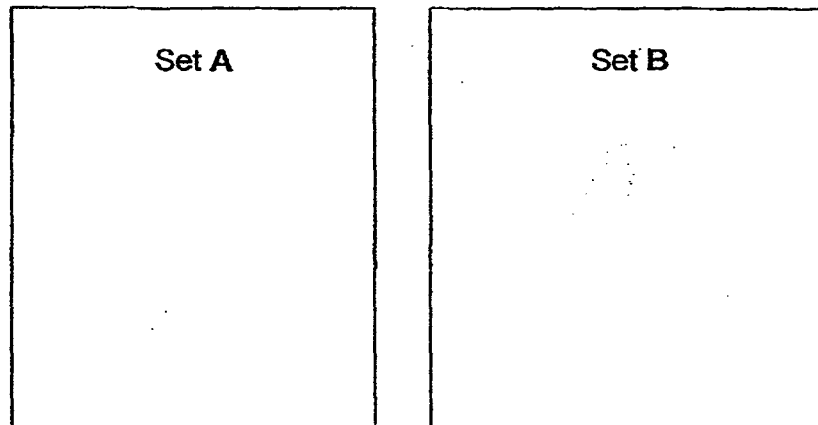
---



19. Donna is given two sets of objects as shown below.



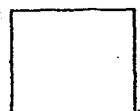
- (a) The objects above are classified according to their \_\_\_\_\_ [1]
- (b) Using another characteristic, draw in the boxes below to show how you would classify all the above objects. [2]



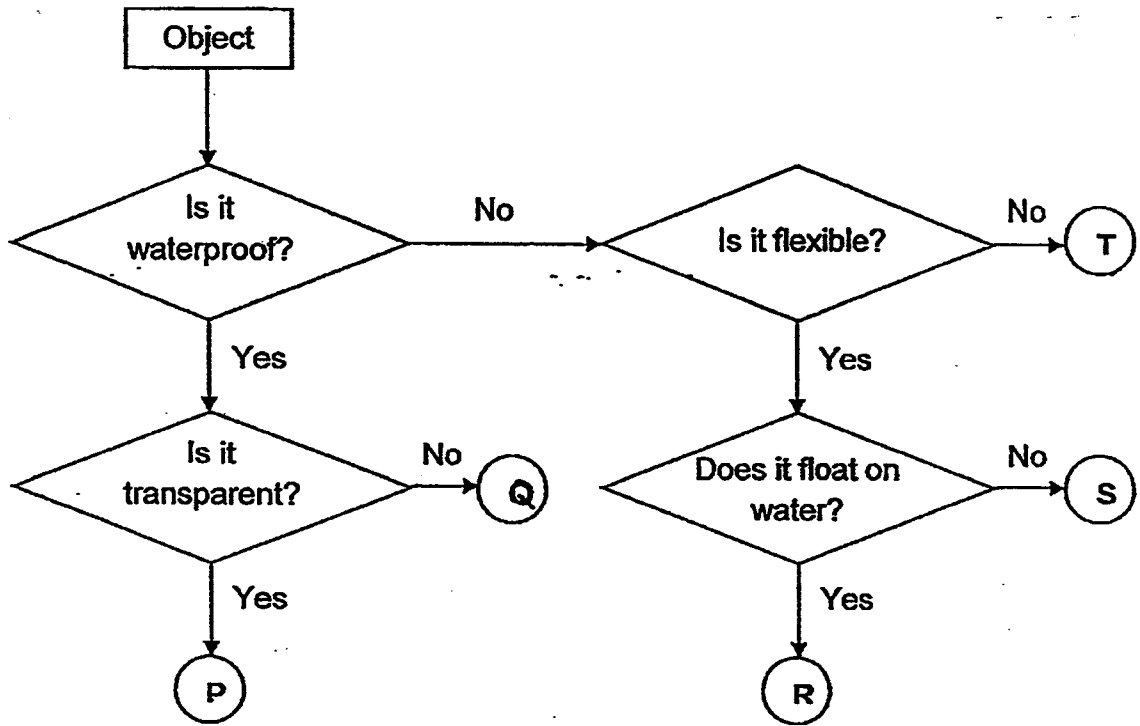
- (c) Based on your answer above, give suitable headings for Set A and Set B respectively.

(i) Set A : \_\_\_\_\_ [½]

(ii) Set B : \_\_\_\_\_ [½]



20. Study the flowchart given below.



(a) Using the flowchart above, state the similarities between R and S. [2]

---



---

(b) Using the flowchart above, state the difference between P and T. [1]

---

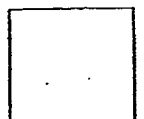


---

(c) In the flowchart above, where will you place the objects given below?

(i) Rubber Tyres : \_\_\_\_\_ [½]

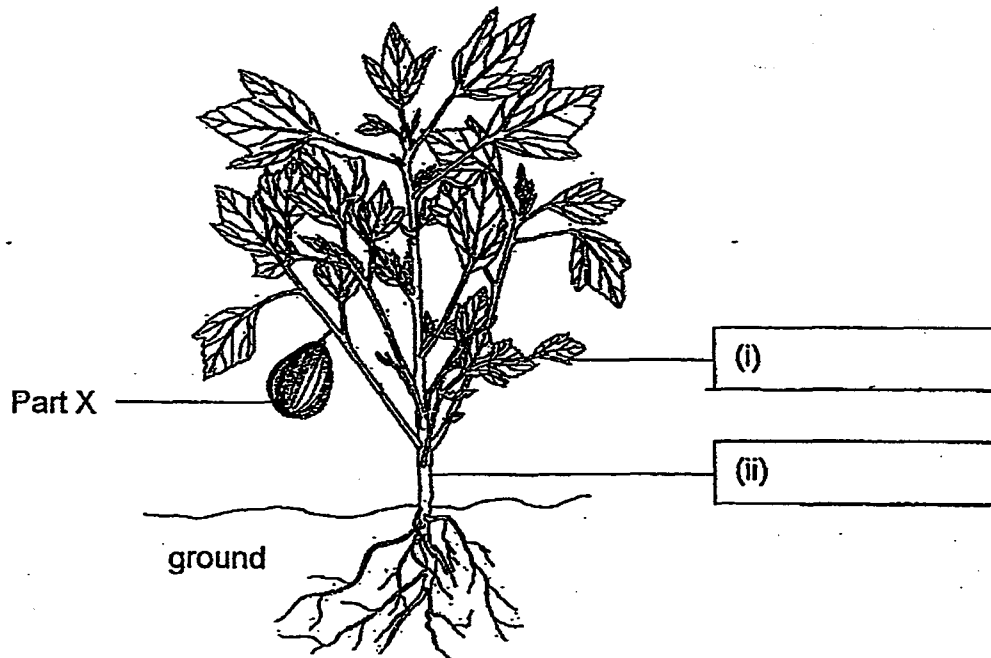
(ii) Large Bath Towel : \_\_\_\_\_ [½]



21. The diagram below shows a plant.

(a) Name the parts labelled (i) and (ii).

[1]



(b) State how Part X is important to the plant.

[1]

22. Benson observed a young plant. The following table records the number of leaves that it has over five weeks.

Week	1	2	3	4	5
Number of Leaves	2	5	?	10	14

(a) Based on above table, what do you think the number of leaves at the end of week 3 will be?

[1]

(b) At the end of Week 6, Benson noticed that there were only 3 leaves left on the plant as some leaves had fallen and the plant had turned yellow. Give a possible reason for this observation.

[1]

END OF BOOKLET B



**EXAM PAPER 2015**

**SCHOOL : CHIJ**

**SUBJECT : P3 SCIENCE**

**TERM : SA1**

<b>Q1</b>	<b>Q2</b>	<b>Q3</b>	<b>Q4</b>	<b>Q5</b>	<b>Q6</b>	<b>Q7</b>	<b>Q8</b>	<b>Q9</b>	<b>Q10</b>
<b>4</b>	<b>2</b>	<b>4</b>	<b>3</b>	<b>3</b>	<b>3</b>	<b>4</b>	<b>1</b>	<b>2</b>	<b>2</b>
<b>Q11</b>	<b>Q12</b>	<b>Q13</b>	<b>Q14</b>	<b>Q15</b>					
<b>2</b>	<b>4</b>	<b>2</b>	<b>4</b>	<b>3</b>					

**16)a) The animals in group A live on land while the animals in group B live in water.**

**16)b) Both as frogs can live on both land and in water.**

**17)Have legs-C**

**Short beak- B**

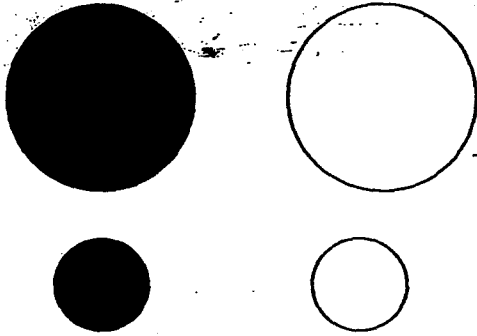
**18)a) Mould**

**18)b) The leather jacket was placed in wardrobe B.**

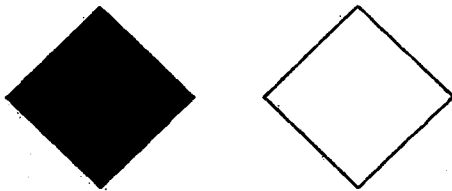
**18)c) There is moisture for the mould to grow.**

**19)a) Size**

**19)b)set A**



**Set B**



**19)c)i) Set A: Circle**

**19)c)ii) Set B: Diamond**

**20)a) Both R and S are not waterproof and both are flexible.**

**20)b) P is waterproof but T is not waterproof.**

**20)c)i) Q      20)c)ii) S      21)a)i) Leaf      21)a)ii) Steam**

**21)b) Part X is important to the plant as part X will reproduce more of the plant.**

**22)a) The number of leaves at the end of week 3 will be 7.**

**22)b) The plant is dying because Benson did not water the plant well.**