

**CATHOLIC HIGH SCHOOL  
SEMESTRAL ASSESSMENT 1  
2015  
PRIMARY THREE**

**SCIENCE**

**BOOKLET A**

7 questions

20 marks

Total Time for Booklets A and B: 1 hour 15 minutes

**INSTRUCTIONS TO CANDIDATES**

Do not turn over this page until you are told to do so.

Follow all instructions carefully.

Answer all questions.

Write your answers in this booklet.

This booklet consists of 8 printed pages, excluding the cover page.

**Booklet A (20 × 2 marks)**

For each question from 1 to 20, four options are given. One of them is the correct answer. Make your choice (1, 2, 3 or 4). Shade your answer on the Optical Answer Sheet. (40 marks)

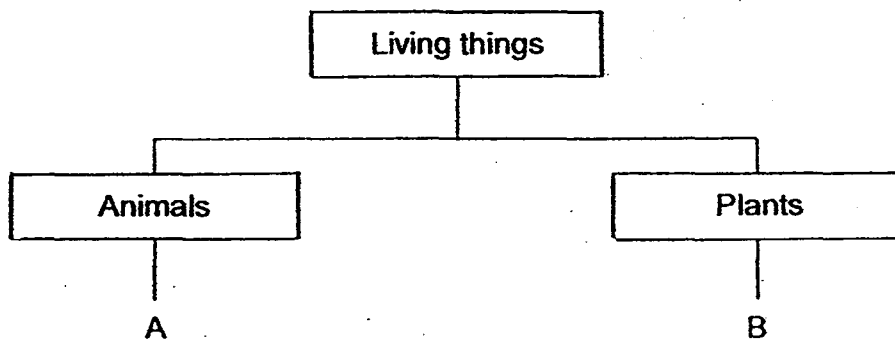
1. Which one of the following groups consists of only non-living things?

- (1) Air, plant, rain
- (2) Fan, candle, girl
- (3) Bird, grass, water
- (4) Rain, cloud, smoke

2. Which one of the following shows the characteristic of living things?

- (1) A fire getting bigger.
- (2) A hat being blown away by the wind.
- (3) A car moving slowly on the slippery road.
- (4) A mimosa plant closes its leaves when touched.

3. Study the classification chart below.



What do A and B represent?

	A	B
(1)	moss	yeast
(2)	duck	orchid
(3)	horse	toadstool
(4)	bacteria	mushroom

4 The table below shows some information about an organism.

Week	Height (cm)
1	13
2	26
3	39

Based on the table above, what can you say about the organism?

The organism is \_\_\_\_\_.

- (1) dead
- (2) growing
- (3) reproducing
- (4) moving over a distance

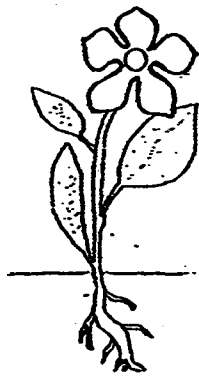
5 The bird's nest fern, moss and rose are similar because they \_\_\_\_\_.

- A live on land
- B are non-flowering
- C make their own food
- D reproduce from spores

Which statements are correct?

- (1) A and C only
- (2) B and D only
- (3) A, B and C only
- (4) B, C and D only

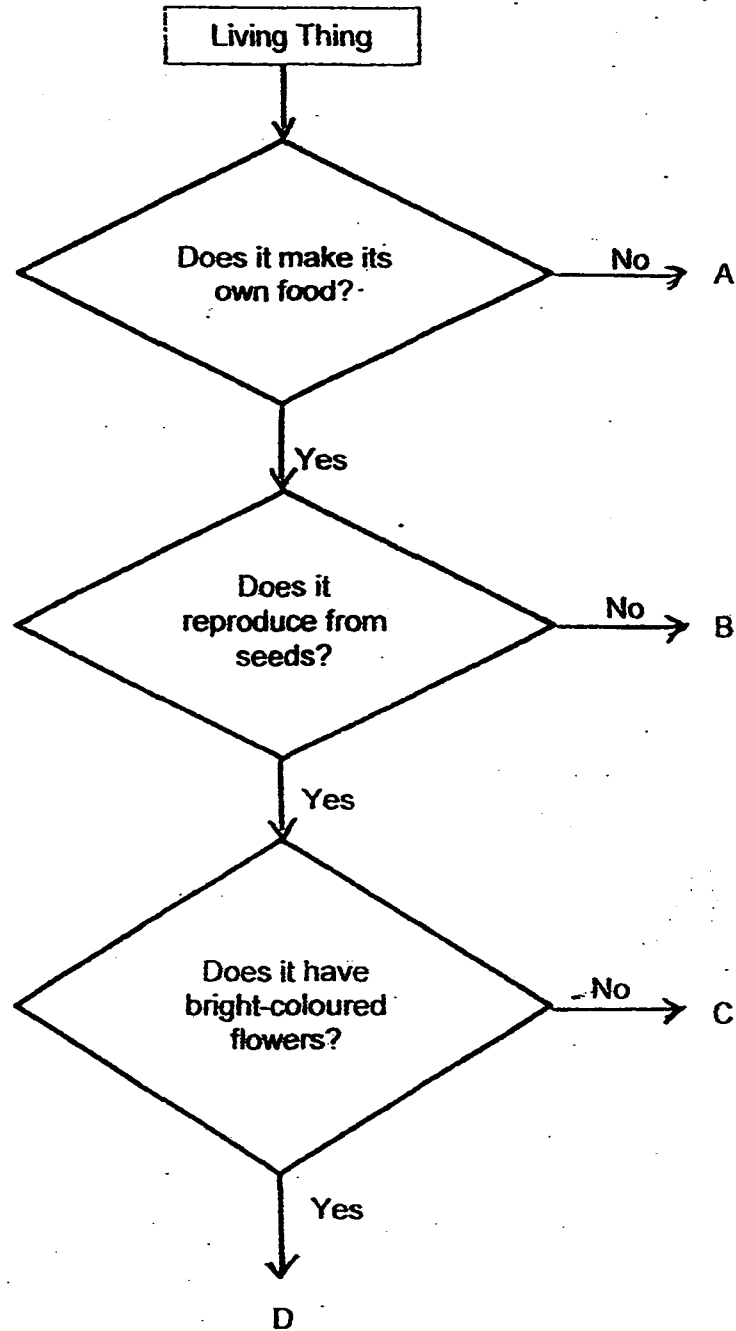
6 – Sam observed the plant below and recorded his observations in the table below.



Which of the following is the correct observation that Sam made?

	Has flowers	Has fruits	Has stem	Grows on land
(1)		✓	✓	✓
(2)	✓		✓	✓
(3)	✓	✓		✓
(4)	✓	✓	✓	

7 Study the flowchart below carefully.

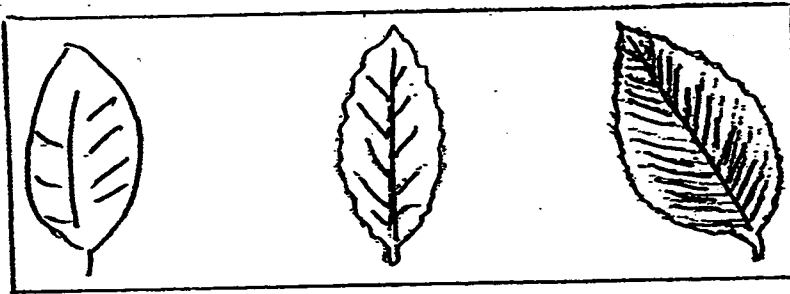


Which one of the following best represents the hibiscus?

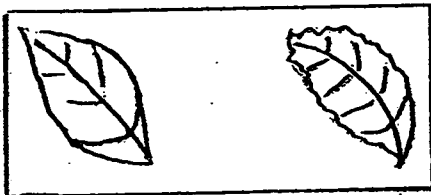
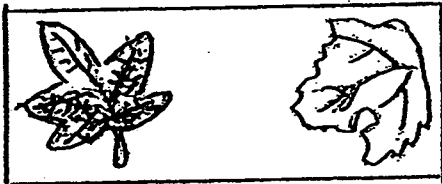
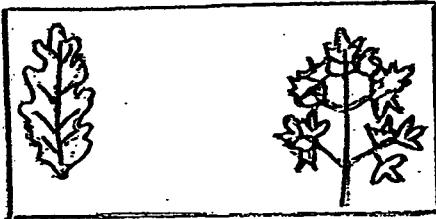
- (1) A
- (2) B
- (3) C
- (4) D

8

Study the below carefully.



Which one of the following pair of leaves below belongs to the same type of leaves shown above?



9 The table below shows how the four groups of animals breathe. Which one of the following is wrongly matched?

	Group	Breathe through
(1)	fish	gills
(2)	birds	dry skin
(3)	mammals	lungs
(4)	amphibians	moist skin

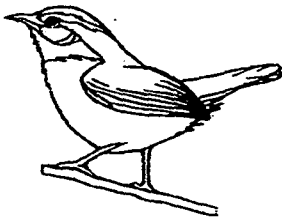
10 Animal X has the following characteristics.

- It produces milk for its young.
- It gives birth to its young alive.

Which one of the following is another characteristic of animal X?

- (1) It has gills.
- (2) It has a beak.
- (3) It has 3 body parts.
- (4) It has hair on its body.

11 The pictures below show two organisms.



bird

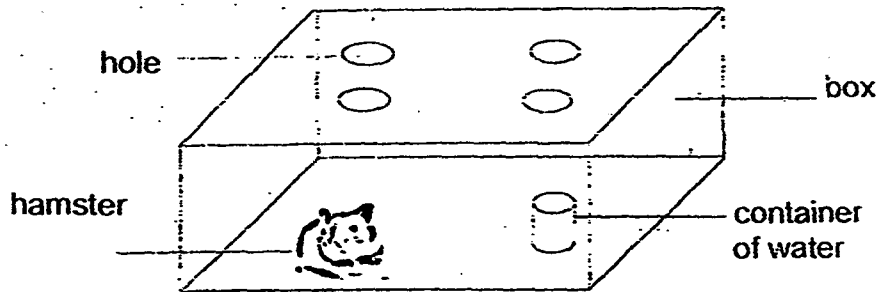


insect

Which of the following is a common characteristic of both the bird and insect?

- (1) Both lay eggs.
- (2) Both have one pair of wings.
- (3) Both have a hard outer covering.
- (4) Both have the same number of legs

12. A hamster was kept in a box as shown below.



What could happen to the hamster after some time?

- (1) The hamster would survive as it was given air.
- (2) The hamster would survive as it was given water.
- (3) The hamster would die as it did not have any food.
- (4) The hamster would die as it could not receive sunlight.

13. Study the classification table below carefully.

Group P	Group Q	Group R	Group S
ant caterpillar	rabbit kangaroo	dolphin goldfish	bat eagle

How are the animals above grouped?

- (1) By their sizes
- (2) By the way they move
- (3) By the way they reproduce
- (4) By their outer body coverings



14 The following are four statements about microorganisms.

- A Yeast is an example of bacteria
- B Bacteria can make their own food.
- C Bacteria may be useful or harmful to humans.
- D Microorganisms are so tiny that we need to use a microscope to see them.

Which of the statements are correct?

- (1) A and B only
- (2) B and C only
- (3) C and D only
- (4) A, C and D

15 Which of the following is/are necessary for bread to turn mouldy?

- A water
- B oxygen
- C warmth

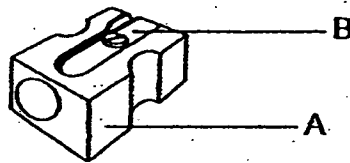
- (1) A only
- (2) A and C only
- (3) B and C only
- (4) A, B and C

16. Fungi need \_\_\_\_\_ to grow.

- E air
- F food
- G water
- H sunlight

- (1) E, F and G only
- (2) E, F and H only
- (3) E, G and H only
- (4) F, G and H only

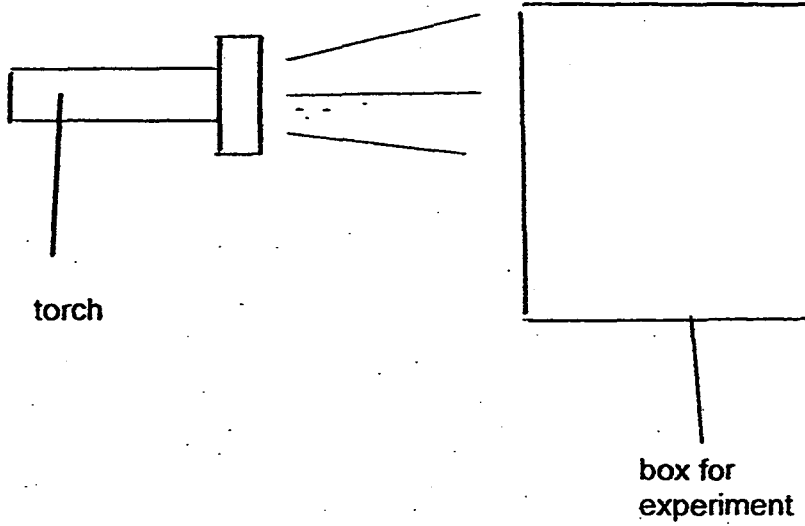
17. The picture below shows a sharpener.



What are parts A and B made of?

	A	B
(1)	Wood	Rubber
(2)	Paper	Metal
(3)	Plastic	Metal
(4)	Rubber	Plastic

- 18 Peter wants to make a box for an experiment on plants. He wants light to pass through the box so that the plant can get sunlight to grow.



Which material should Peter use to make the box?

- (1) glass
- (2) metal
- (3) paper
- (4) ceramic

- 19 The table below shows 4 materials, A, B, C and D, and their properties. A tick (✓) shows the property that each material has.

Properties	Materials			
	A	B	C	D
Light	✓	✓	✓	
Flexible	✓	✓		
Waterproof		✓	✓	✓



raincoat

Which material is suitable for making a raincoat?

- (1) Material A
- (2) Material B
- (3) Material C
- (4) Material D

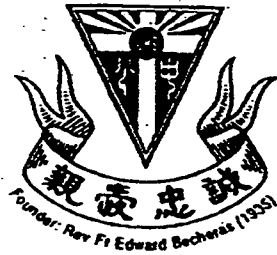
- 20 Muthu was given four different bags. He put bottled drinks, one at a time, into each bag until it began to tear. He recorded his observations in the table below.

Bags	Number of bottled drinks put in the bag before it began to tear
A	3
B	6
C	2
D	9

Based on the results in the table above, which bag is the strongest?

- (1) Bag A
- (2) Bag B
- (3) Bag C
- (4) Bag D

End of Booklet A



**CATHOLIC HIGH SCHOOL  
SEMESTRAL ASSESSMENT 1  
2015  
PRIMARY THREE**

**SCIENCE**

**BOOKLET B**

7 questions

20 marks

Total Time for Booklets A and B: 1 hour 15 minutes

**INSTRUCTIONS TO CANDIDATES**

Do not turn over this page until you are told to do so.

Follow all instructions carefully.

Answer all questions.

Write your answers in this booklet.

This booklet consists of 8 printed pages, excluding the cover page.

**Booklet B (20 marks)**

For questions 21 to 27, write your answers in this booklet.

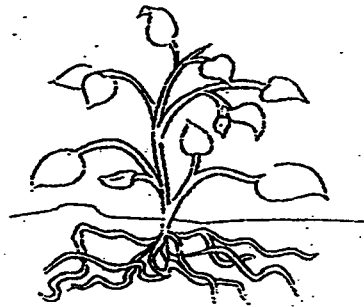
The number of marks available is shown in brackets [ ] at the end of each question or part question. (20 marks)

---

21 Look at the two plants below carefully.



Plant X



Plant Y

- (a) State a difference between Plant X and Plant Y. [1]  
(Do not compare shape or size.)

\_\_\_\_\_

- (b) What are the three basic needs Plants X and Y need in order to survive? [1]

Both plants need \_\_\_\_\_, \_\_\_\_\_ and \_\_\_\_\_.

(Go on to the next page)

SCORE	2
-------	---

- 22 The table below shows the characteristics of four plants, A, B, C and D. A tick (✓) shows the characteristic that each plant has:

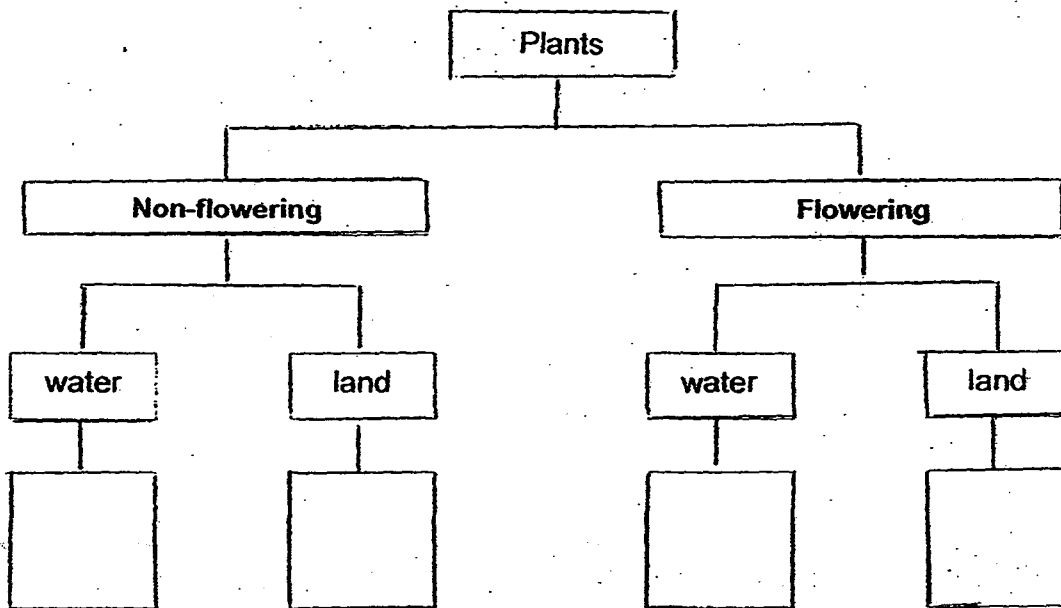
Characteristics	Plants			
	A	B	C	D
Has flowers	✓			✓
Grows in water		✓		✓

- (a) Based on the information given in the table above, write down two [1]  
characteristics of Plant B.

(i) \_\_\_\_\_

(ii) \_\_\_\_\_

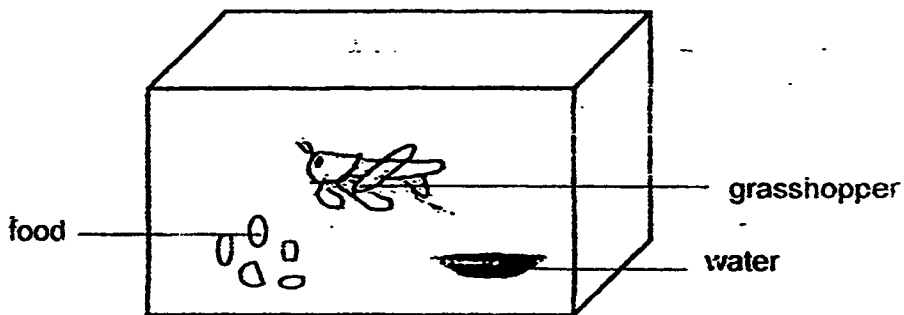
- (b) Based on the table above, classify the plants (A, B, C and D) in the [2]  
classification chart below.



(Go on to the next page)

SCORE	3
-------	---

23 Jane placed a grasshopper in an air-tight box with food and water. A few days later, the grasshopper died.



(a) Which group of animals does the grasshopper belong to? [1]

---

(b) Why did the grasshopper die? [1]

---

---

(c) Without changing the box, what could Jane do to prevent the grasshopper from dying? [1]

---

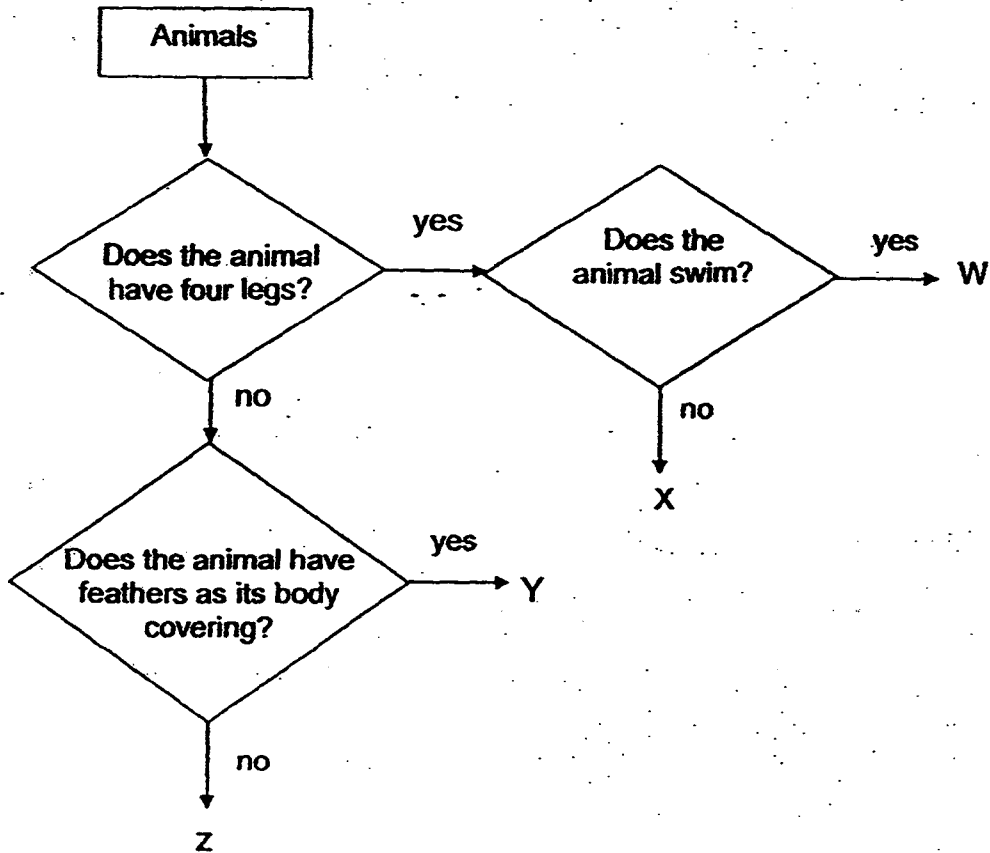
---

(Go on to the next page)

SCORE	
-------	---



24 Study the flowchart below.



(a) Based on the flowchart above, write down the characteristics of animal W. [1]

---

---

(b) How is animal W different from animal Z? [1]

---

---

(c) Which group of animals does animals Y belong to? [1]

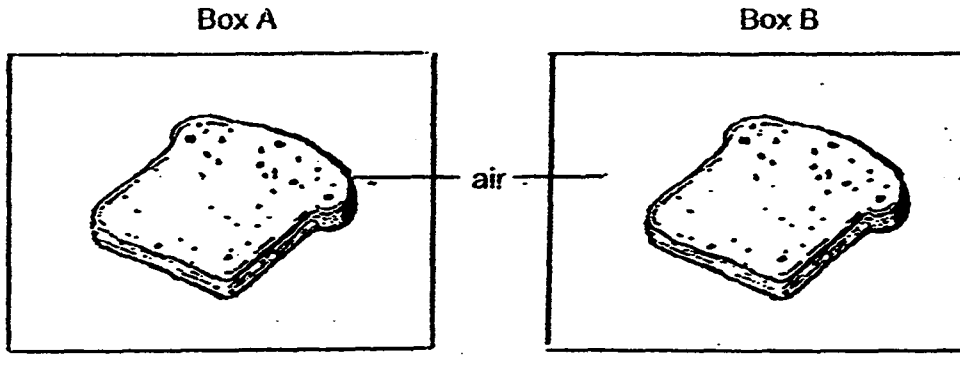
---

---

(Go on to the next page)

SCORE	3
-------	---

- 25 Amber wanted to find out if water affects the growth of mould. She placed two similar pieces of bread in two identical sealed boxes. She sprayed some water onto the bread in Box A and did not put any water on the bread in Box B. She then placed both boxes in a warm cupboard.



- (a) Tick the variables that Amber has kept the same in the 2 set-ups. [2]

Variable	Tick (✓)
Type of box	
Size of bread	
Type of bread	
Presence of water	

- (b) Which bread will have mould growing on it first? Explain why. [1]

---



---

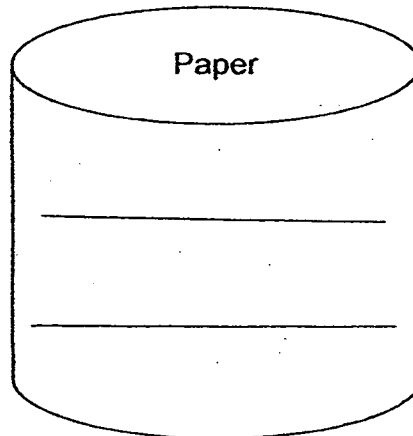
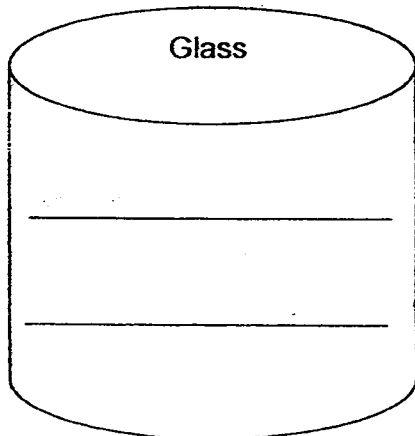
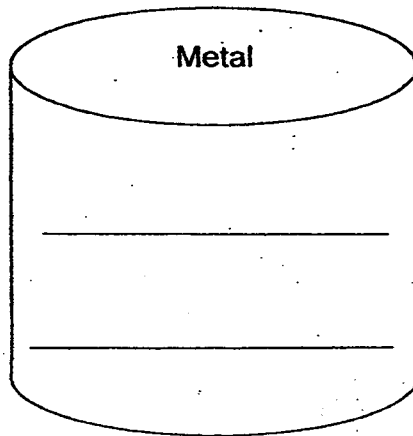
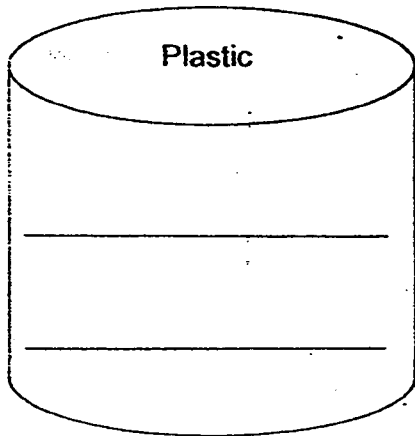
(Go on to the next page)

SCORE	3
-------	---

26 Maggie's class is involved in a recycling project. The following are the objects Maggie found in the recycling bin.

book	drink can
mirror	mineral water bottle

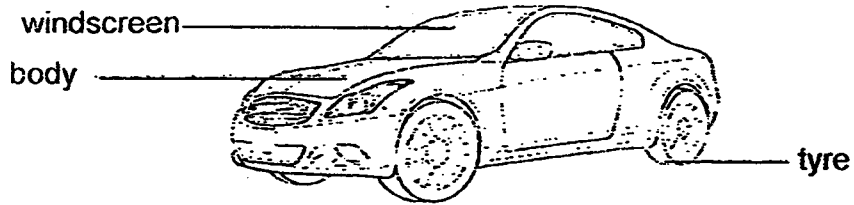
Based on the materials the objects are made of, classify the objects under [2] the correct materials.



(Go on to the next page)

SCORE	2
-------	---

27(a) The picture below shows a car.



Complete the table below.

[3]

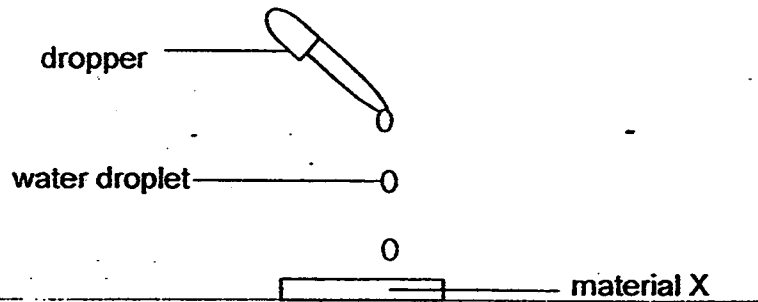
Part of car	Material	Property	Reason
windscreen		transparent	allows driver to see through
body	metal		will not be easily dented
tyre	rubber	flexible	

(Go on to the next page)

SCORE	3
-------	---

Continue from Question 27(a).

- (b) Ignatius carried out an experiment on 3 different materials X, Y and Z. He placed 5 drops of water using a dropper on material X as shown below.



He recorded his observations in the table below. He repeated the experiment with Materials Y and Z.

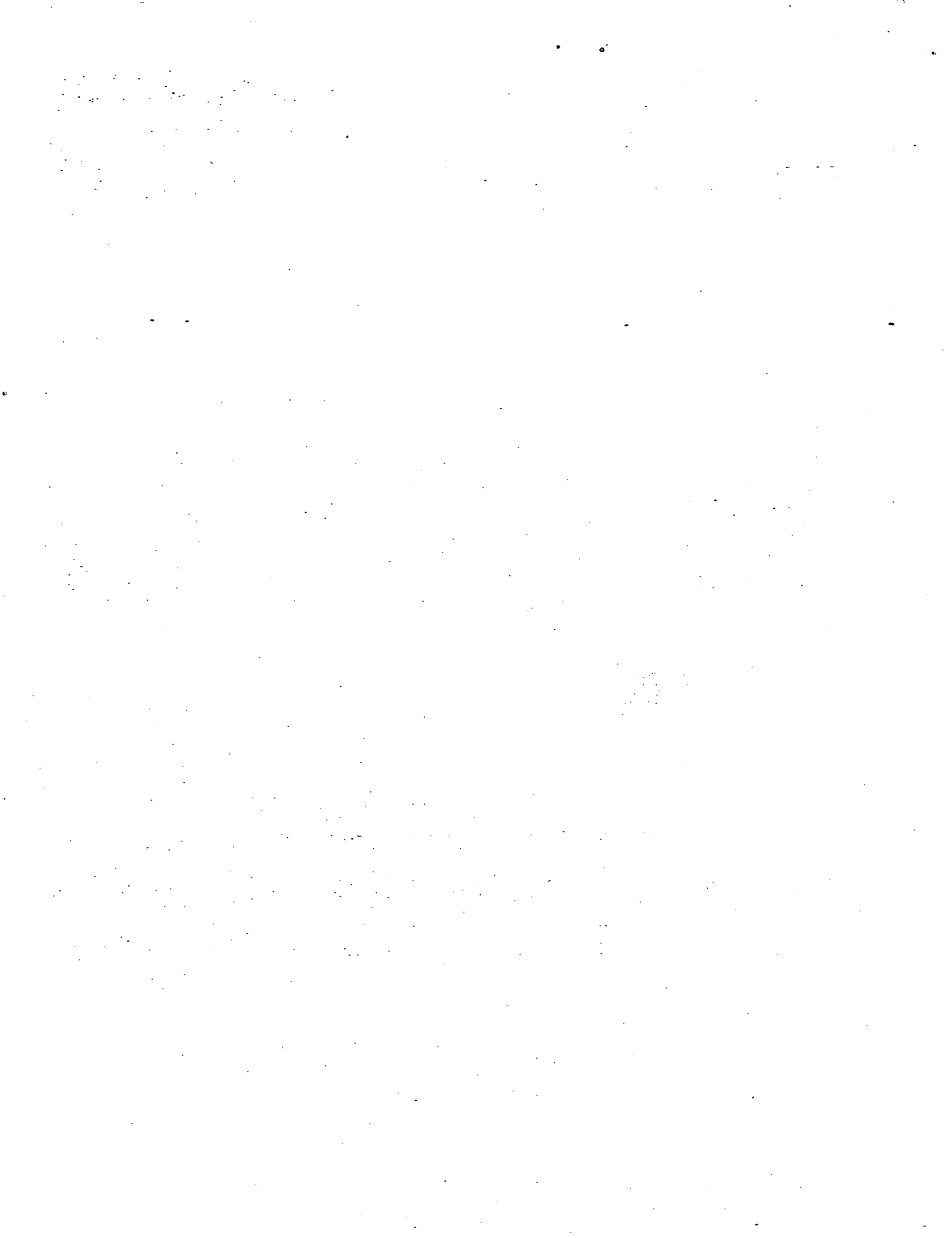
Material	Observation
X	The material absorbed water immediately.
Y	The water flowed off the sides of the material.
Z	All the water remained as water droplets on the material.

Classify the three materials X, Y and Z under the correct headings.

[1]

Waterproof materials	Non-waterproof materials

SCORE	1
-------	---



**EXAM PAPER 2015****LEVEL : PRIMARY 3****SCHOOL : CATHOLIC HIGH SCHOOL****SUBJECT : SCIENCE****TERM : SA1**

Q1	Q2	Q3	Q4	Q5	Q6	Q7	Q8	Q9	Q10
4	4	2	2	1	2	4	3	2	4
Q11	Q12	Q13	Q14	Q15	Q16	Q17	Q18	Q19	Q20
2	3	2	3	4	1	3	1	2	4

Q21a. Plant X is a flowering plant but plant Y is a non flowering plant.

Q21b. Both plants need AIR , WATER and FOOD.

Q22ai) It does not bear flower. Q22aii) It grows in water.

Q22b. Non -flowering - water → B , Land → C

Q22b. Flowering - water → D, Land → A.

Q23a. It belongs to the group insects.

Q23b. It had food and water but did not have air to breath to survive.

Q23c. She could have made holes on the box to let air come into the box to let the grasshopper breathe in air so it could have survived.

Q24a. It has four legs and swims.

Q24b. Animal W has four legs but animal Z does not have four legs.

Q24c. Animal Y is a bird.

Q25a. Type of box ✓ Size of bread ✓ Type of bread ✓

Q25b. The bread in box A will have mould growing on it first. Bread mould grows best in the presence of water while the bread in box A was sprayed with water but the bread had no water sprayed on it.

Q26. Plastic - mineral water bottle

Q26. Metal - Drink can

Q26. Glass - Mirror

Q26. Paper - book

Q27a.

Part of car	Material	Property	Reason
Windscreen	glass	transparent	Allows driver to see through
Body	metal	strong	Will not be easily dented
tyre	rubber	Flexible	Can be bent easily

Q27b. Waterproof materials - Y - The water flowed off the sides of the material.

Q27b. Non -waterproof materials - Z - All the water remained as water droplets on the material.

**THE END**

