

**RIVER VALLEY PRIMARY SCHOOL
CONTINUAL ASSESSMENT 1 / 2015
PRIMARY 3**

SCIENCE

(BOOKLET A)

Name : _____ () Date : 5th March 2015

Class : P3 _____ Total Time for Booklet A & Booklet B : 1 hr

INSTRUCTIONS TO CANDIDATES

1. Write your name, index number and class in the space above.
2. Do not turn over this page until you are told to do so.
3. Follow all instructions carefully.
4. Answer all questions.
5. For Section A, shade your answers for questions 1 to 7 in the Optical Answer Sheet (OAS) provided.
6. For Section B, write your answers for questions 8 to 12 in the space provided in the booklet.
7. - The total marks for Booklet A is 14 marks.

Section A (14 marks)

For each question 1 to 7, four options are given. One of them is the correct answer. Make your choice (1, 2, 3 or 4). Shade the oval (1, 2, 3 or 4) on the Optical Answer Sheet.

1. Study the classification table below.

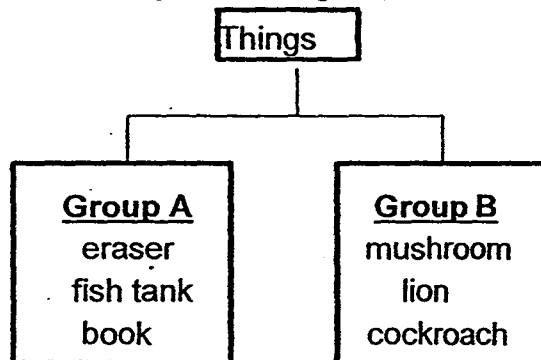
Group 1	Group 2
Lizard	Box
Orchid	Water Bottle
Aeroplane	Key Chain

Which of the following has been classified wrongly?

- (1) Key Chain
- (2) Aeroplane
- (3) Box
- (4) Orchid

()

2. Jasper classified some things into two groups.



Which one of the following can be put in Group B?

- (1) Yeast, Flour, Chocolate
- (2) Cotton Plant, Butterfly, Silk Cloth
- (3) Giraffe, Grass, Elephant
- (4) Envelope, Dried flower, Chicken Rice

()

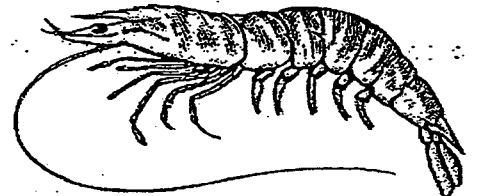
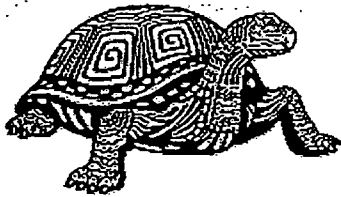
3. Which of the following are characteristics of all living things?

- A: Can die
- B: Need sunlight
- C: Can grow
- D: Need air, water and food

- (1) A and C only
- (2) B and D only
- (3) A, B and D only
- (4) A, C and D only

()

4. How are the following animals similar?



All these animals have _____ as their outer coverings.

- (1) shells
- (2) scales
- (3) feelers
- (4) hard skin

()

5. Jasmine saw Animal X in a pond. She wrote down the following observations

- a) It can breathe through its gills
- b) It lays eggs in the water
- c) It lays eggs in huge numbers

Which of the following animal groups could the Animal X belong to?

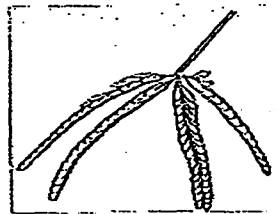
- (1) Fish
- (2) Mammal
- (3) Reptiles
- (4) Insect

()

5. John touched the leaves of the Plant X. He recorded his observations in the diagram below.



Before touching



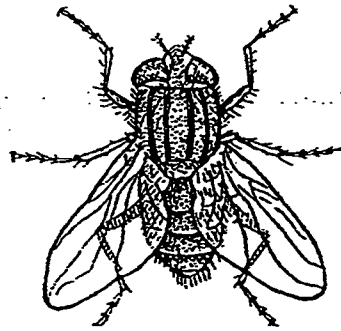
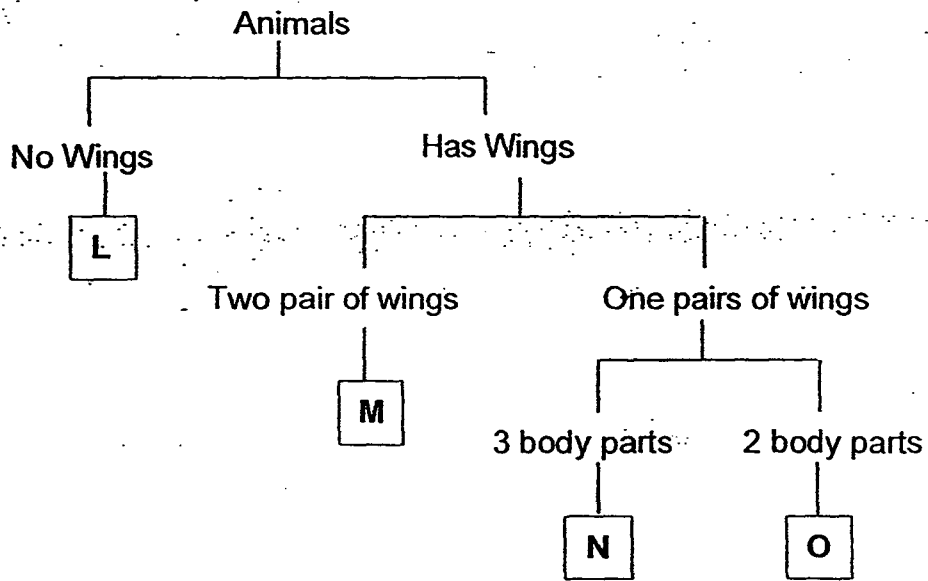
After touching

Which of the following characteristics of living things does John's observation show?

- (1) Reproducing
- (2) Changing its appearance
- (3) Looking for food and water
- (4) Responding to changes around it

()

7. Study the classification diagram below.

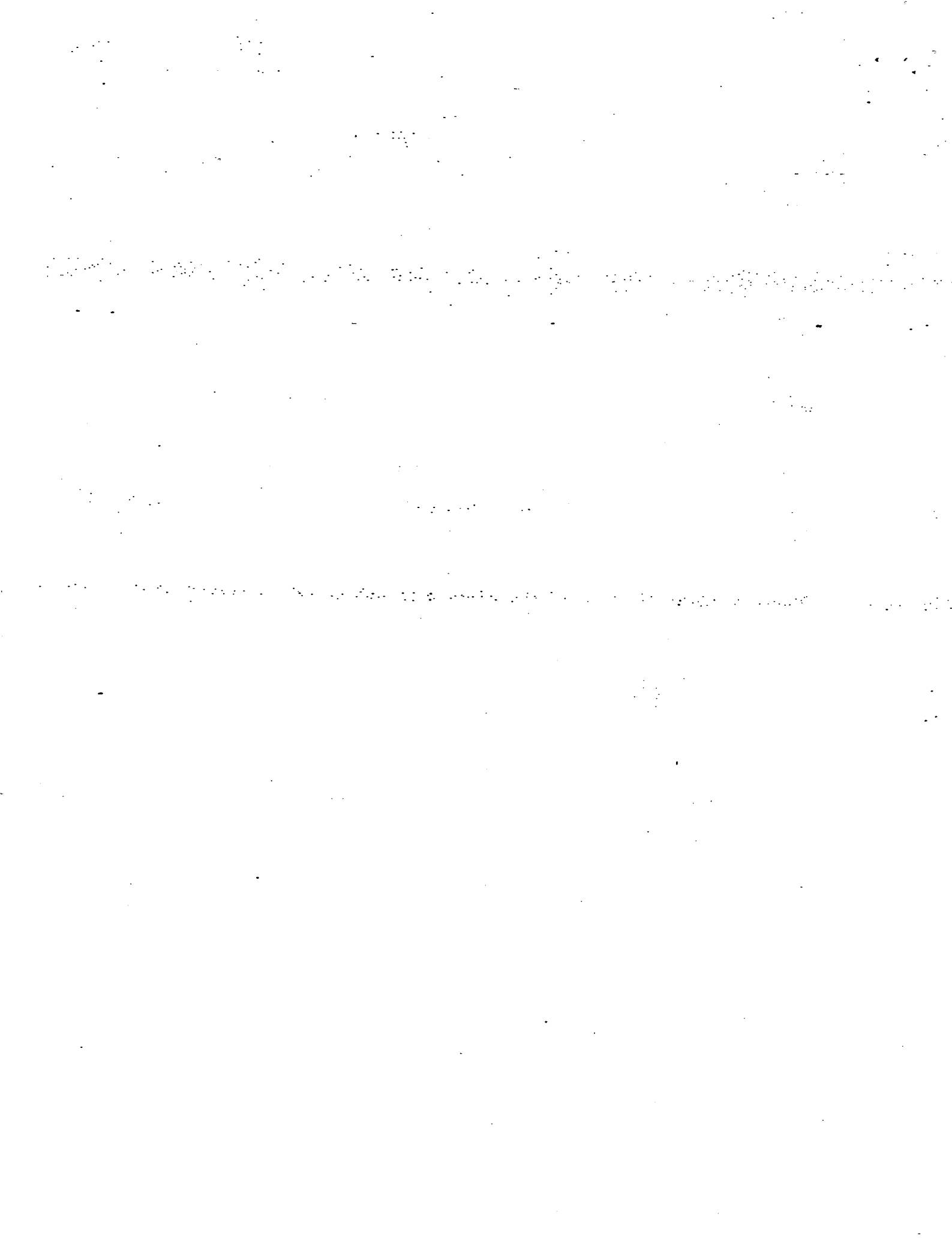


Insect A

Rani found Insect A in her school garden. In which group L, M, N and O does it belong under?

- (1) L
- (2) M
- (3) N
- (4) O

~ End of Section A ~



**RIVER VALLEY PRIMARY SCHOOL
CONTINUAL ASSESSMENT 1 / 2015**

PRIMARY 3

SCIENCE

(BOOKLET B)

Name : _____ () Date : 5th March 2015

Class : P3 _____ Total Time for Booklet A & Booklet B : 1 hr

INSTRUCTIONS TO CANDIDATES

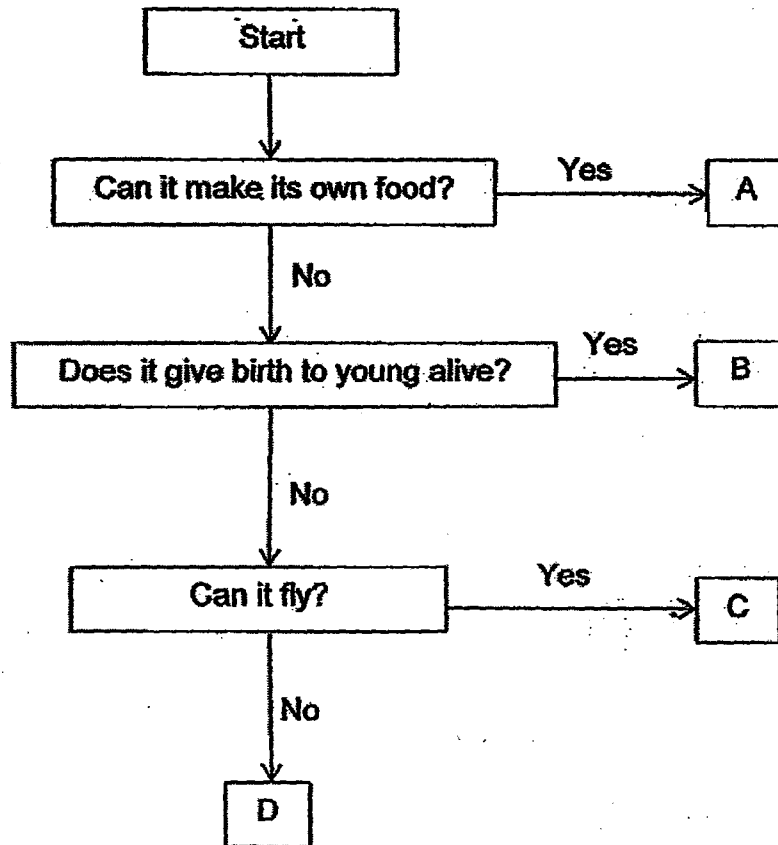
1. Write your name, index number and class in the space above.
2. Do not turn over this page until you are told to do so.
3. Follow all instructions carefully.
4. Answer all questions.
5. For Section A, shade your answers for questions 1 to 7 in the Optical Answer Sheet (OAS) provided.
6. For Section B, write your answers for questions 8 to 12 in the space provided in the booklet.
7. The total marks for Booklet B is 16 marks.

Booklet A		/14
Booklet B		/16
Total		/30
Parent's Signature		

Section B (16 marks)

Write your answers to questions 8 to 12 in this booklet.

8. Study the flow chart below and answer the following questions.



(a) Based on the flow chart above, state a similarity between B and C. [1m]

(b) Which letter (A, B, C or D) best represents a plant? Explain your answer. [1m]

(c) An ostrich is a bird that cannot fly. Which letter (A, B, C or D) best represents the Ostrich? [1m]

9. Look at the buttons below



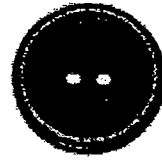
Button A



Button B



Button C



Button D

Jane classified the buttons into 2 groups.

Group X	Group Y
A, D	B, C

(a) Give a suitable heading for each group. [1m]

Group X: _____

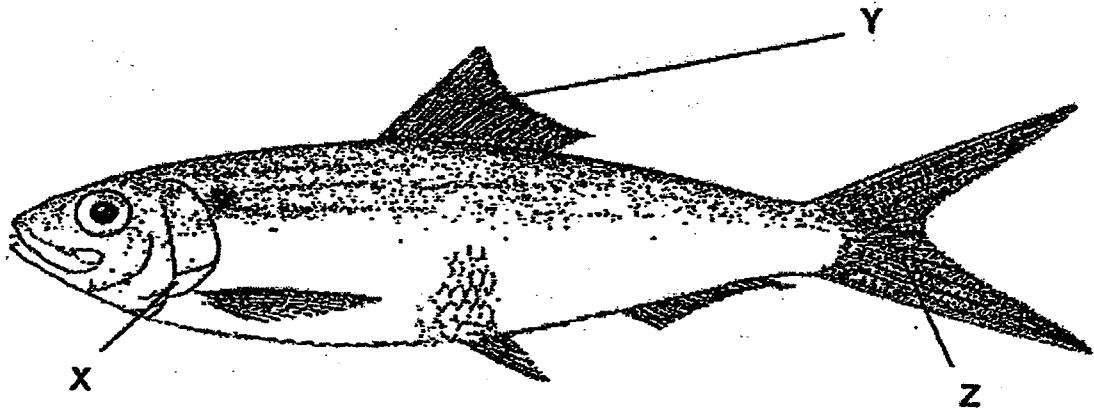
Group Y: _____

(b) State another characteristic that Jane can use to classify the buttons. [1m]

(c) Based on your answer in (b), how would Jane re-group the buttons? [1m]

Group S	Group T
_____	_____
_____	_____

10. Look at the diagram below.



(a) Name the parts of the fish. [1m]

X: _____

Y: _____

(b) What can you find under Part X? [1m]

(c) State the function of Part Z? [1m]

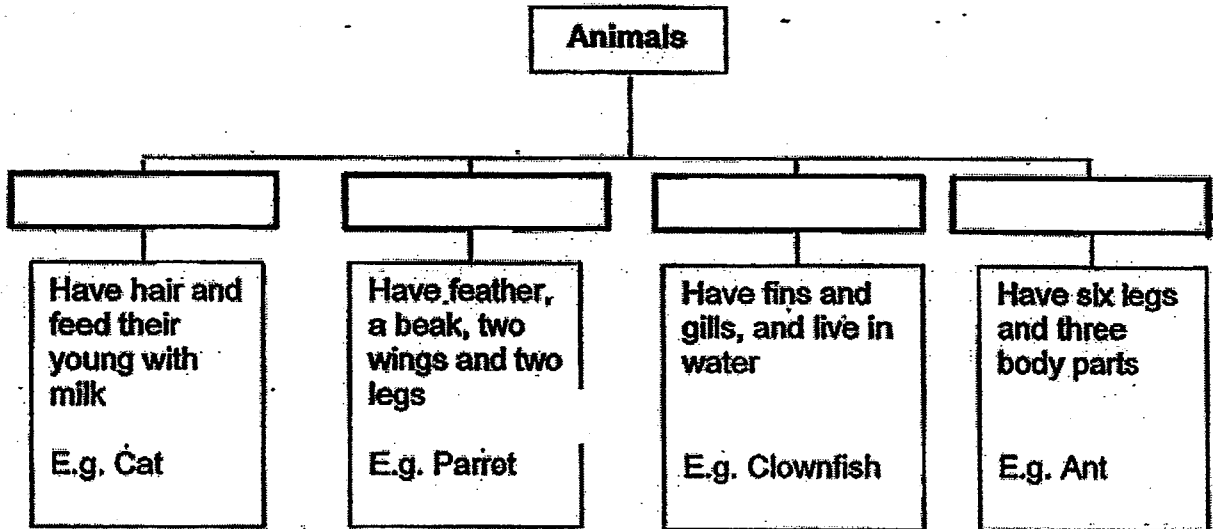
(d) The table below shows the number of fish in Tom's fish tank over a period of time.

Months	Number of Fish
1	20
6	25
12	28
18	34
24	38

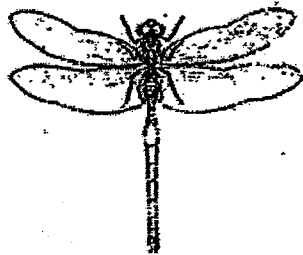
What could have caused the change in the number of fish in the fish tank if no new fishes were added into the fish tank? [1m]

11(a) Look at the classification chart below.

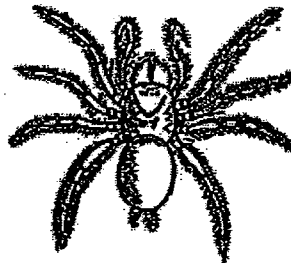
Complete the classification chart below by filling in each blank with the correct heading. [2m]



(b) Look at the two animals below.



Animal P



Animal R

State one difference between Animal P and Animal R. [1m]

	3
--	---

12. A group of students made the following statements about living things.

Jasmine: Plants need sunlight to grow but animals do not.

Muthu: All living things need fertilisers to grow well.

Jing Yi: Animals can reproduce but plants do not.

Ahmad: Plants can make their own food but animals cannot.

a) Which student(s) made the wrong statement(s)? [1m]

b) Muthu also said that animals need to move about. Give two reasons why animals need to move about. [2m]

Reason 1: _____

Reason 2: _____

	3
--	---

~ End of Section B ~

EXAM PAPER 2015

SCHOOL : RIVER VALLEY

SUBJECT : P3 SCIENCE

TERM : CA1

Q1	Q2	Q3	Q4	Q5	Q6	Q7
2	2	4	1	1	4	3

8)a)B and C cannot make their own food.

b)The letter A is best represent a plant, It is because that plants can make their own food.

c)The letter D is best represent a ostrich.

9)a)X: have two holes Y: have four holes

b)Jane can classify the buttons according to the colour.

c)Group S : Button B, Button D

Group T : Button C, Button A

10)a)X: gill cover Y: fin

b)I can find gills and part X

c)It helps the fish to move forward

10)d)The fish is reproducing to increase the number of fish.

11)a)mammals , birds, fishes, insect

b)Animal P has six legs and three body parts but Animal Z has eight legs and 2 body parts.

12)a)Muthu and Jing Yi made the wrong statements.

b)1)They need to look for shelter.

2)They need to find food.